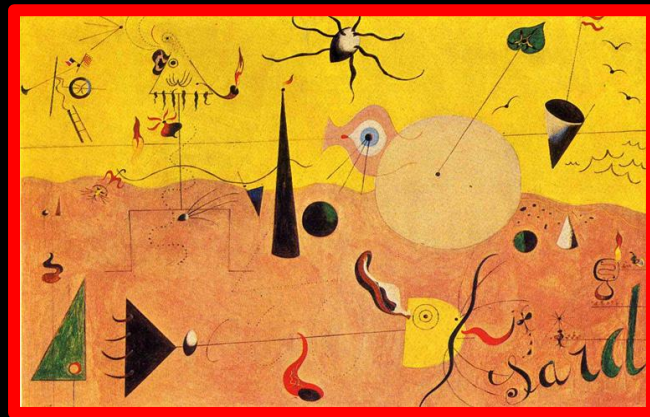


Look at the different pictorial compositions.

- **WHICH ARE THE SURREALISTIC PAINTINGS FOR YOU?**
- **IN WHICH PAINTINGS CAN YOU SEE MIRÓ AUTOMATISM?**



LET'S EXPLORE
THE ARTWORKS

... ..

Miró 's artworks

A brief journey into Surrealism

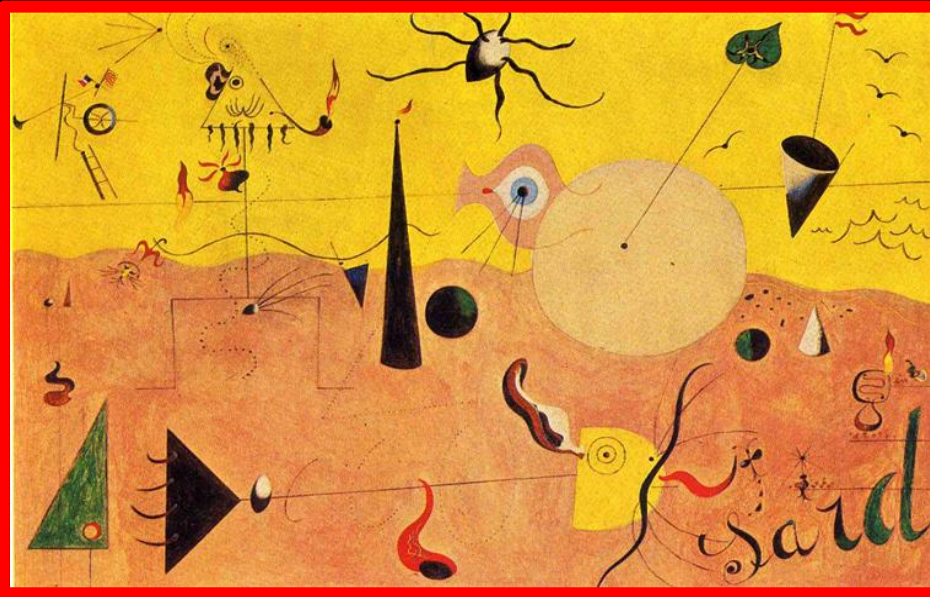
... a form gives me an idea, this idea evokes another form and everything culminate in figures, animals and things. I had no way of foreseeing in advance ...

(Miró)

The garden 1925



- **COLORFUL IMAGE**
- **SIMPLE COUNTRYSIDE**
- **DIFFERENT CHARACTERS: CATERPILLAR, BIRD, ...**
- **PLANTS, ANTHROPOMORPHIZED STARS**
- **STYLIZED ANIMALS**
- **SIMPLE, CHILD LANGUAGE**



The Catalan Landscape

The Hunter

1924

- **Miró explained the detail of the painting in the following terms to one viewer:**
“The Catalan peasant has become a triangle with an ear, eye, pipe, the hairs of a beard and a hand. This is a barretina, the Spanish peasant headdress... ..
I've shown the Toulouse-Rabat airplane on the left; it used to fly past our house once a week. In the painting I showed it by a propellor, a ladder and the French and Catalan flags. You can see the Paris-Barcelona axis again, and the ladder, which fascinated me. A sea and one boat in the distance, and in the very foreground, a sardine with tail and whiskers gobbling up a fly. A broiler waiting for the rabbit, flames and a pimento on the right...”
- **Miró elements move away from the real dimension**
- **World of signs, symbols and imagination**

The morning star 1940



- LIGHT AND FANTASTIC REPRESENTATION OF REALITY
- REFERENCE TO THE WORLD OF DREAMS
- SOFT SHAPES AND LINES
- PAINTING ALL-ROUND
- SIMPLE AND CHILDISH FORMS
(«The art of children is the most fertile manifestation of the mind»)
- THE BACKGROUND BECOMES THE RAREFIED SPACE IN WHICH FILIFORM ELEMENTS SOAR INTO A UNIVERSE OF SURREALITY